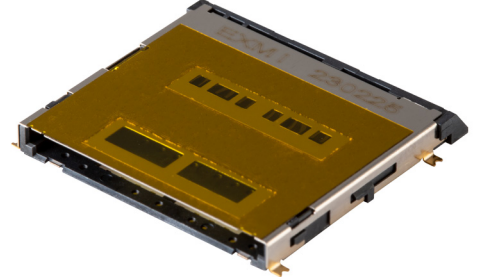


**MODEL:** SD4-3-B | **DESCRIPTION:** SD 4.0 CARD CONNECTOR

**FEATURES**

- SD 4.0 card connector
- push in, pull out
- card detect switch
- gold flash
- surface mount
- UL94V-0

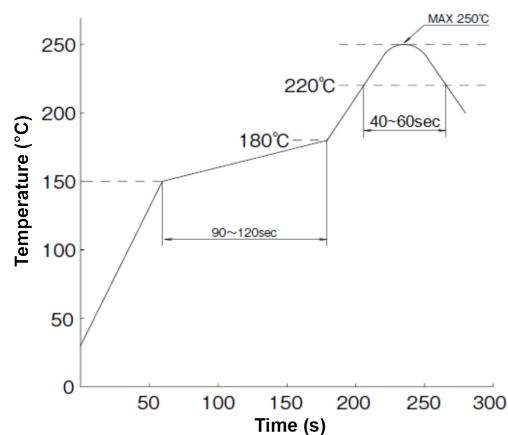

**SPECIFICATIONS**

parameter	conditions/description	min	typ	max	units
rated voltage				30	V
rated current				0.5	A
contact resistance <sup>1</sup>				100	mΩ
insulation resistance	at 500 Vdc, between adjacent circuits	1,000			MΩ
voltage withstand	for 1 minute, between adjacent circuits		100		Vac
insertion force	at a rate of 25 mm/min			10	N
withdrawal force	at a rate of 25 mm/min	0.5			N
life			5,000		cycles
operating temperature		-40		85	°C
flammability rating	UL94V-0				
RoHS	yes				

Note: 1. When measured at 20 mV / 100 mA.

**SOLDERABILITY**

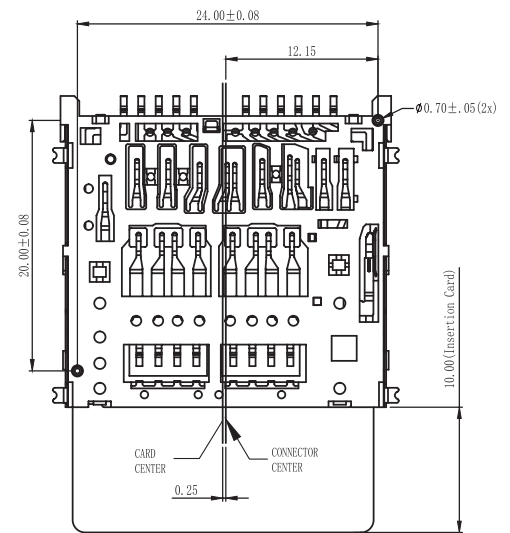
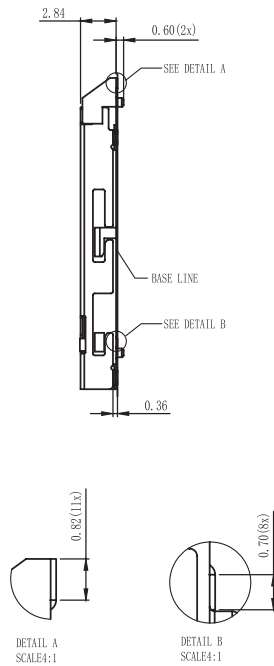
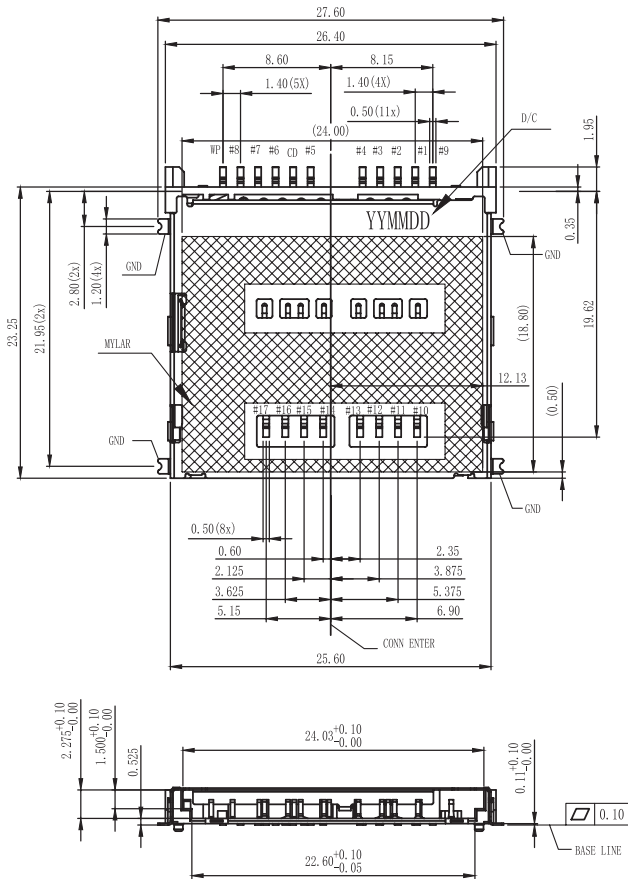
parameter	conditions/description	min	typ	max	units
reel storage	at relative humidity 40-70% reel opened: use within 1 month reel unopened: up to 15 month shelf life	16	22	28	°C
reflow soldering	see reflow profile			250	°C



## MECHANICAL DRAWING

units: mm  
 tolerance:  
 X.X ±0.38 mm  
 X.XX ±0.25 mm  
 X.XXX ±0.10 mm  
 unless otherwise specified

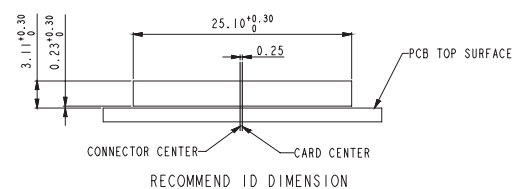
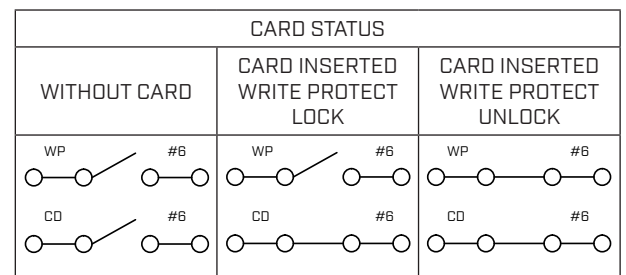
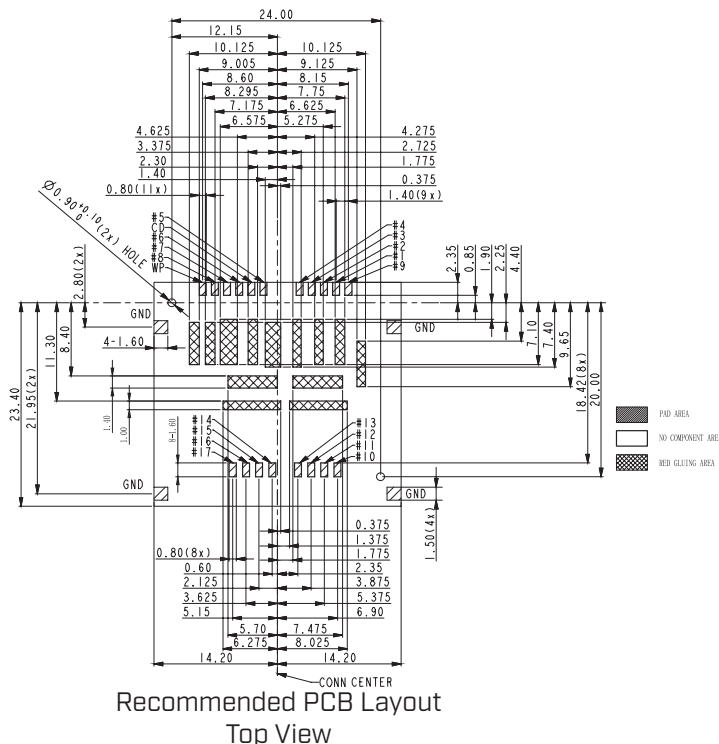
DESCRIPTION	MATERIAL	PLATING/COLOR
housing	LCP (UL94V-0)	black
contact terminals	phosphor bronze t=0.12 mm	contact area: gold over nickel solder area: gold flash over nickel
cover	SUS304 t=0.15 mm	contact area: gold flash over nickel solder area: gold flash over nickel



## MECHANICAL DRAWING (CONTINUED)

units: mm  
PCB tolerance: ±0.05 mm

PIN CONNECTIONS						
PIN#	SD MODE			UHS-II MODE		
	SIGNAL NAME	TYPE	DESCRIPTION	SIGNAL NAME	TYPE	DESCRIPTION
9	DAT2	I/O/PP	DATA LINE (BIT 2)	-	-	NOT USED
1	CD/DAT3	I/O/PP	CARD DETECT/DATA LINE (BIT 3)	-	-	NOT USED
2	CMD	PP	COMMAND/RESPONSE	-	-	NOT USED
3	VSS1	S	SUPPLY VOLTAGE GROUND	VSS1	S	SUPPLY VOLTAGE GROUND
4	VDD	S	SUPPLY VOLTAGE	VDD1	S	SUPPLY VOLTAGE (3.3 V)
5	CLK	I	CLOCK	-	-	NOT USED
CD	CD	-	CARD DETECT SWITCH	CD	-	CARD DETECT SWITCH
6	VSS2	S	SUPPLY VOLTAGE GROUND	VSS2	S	SUPPLY VOLTAGE GROUND
7	DAT0	I/O/PP	DATA LINE (BIT 0)	RCLK+	I	RCLK+
8	DAT1	I/O/PP	DATA LINE (BIT 1)	RCLK-	I	RCLK-
WP	WP	-	WRITE PROTECT	WP	-	WRITE PROTECT
10	-	-	NOT USED	VSS3	S	SUPPLY VOLTAGE GROUND
11	-	-	NOT USED	DO+	LVDS	DO+
12	-	-	NOT USED	DO-	LVDS	DO-
13	-	-	NOT USED	VSS4	S	SUPPLY VOLTAGE GROUND
14	-	-	NOT USED	VDD2	S	SUPPLY VOLTAGE (1.8 V)
15	-	-	NOT USED	D1-	LVDS	D1-
16	-	-	NOT USED	D1+	LVDS	D1+
17	-	-	NOT USED	VSS5	S	SUPPLY VOLTAGE GROUND
GND	-	-	COVER GROUND	-	-	COVER GROUND



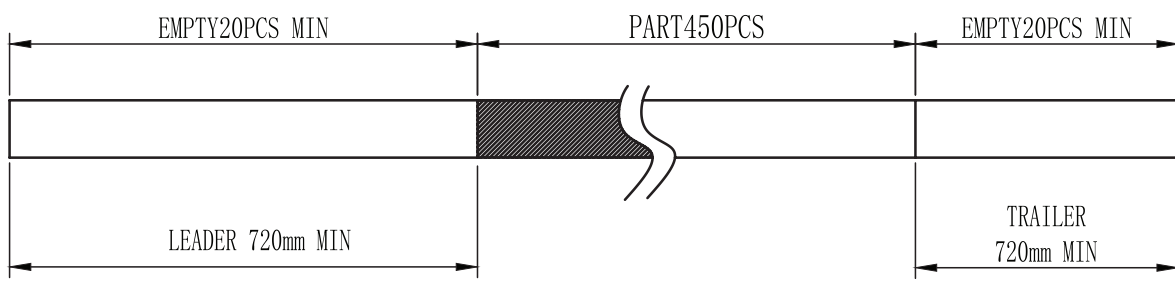
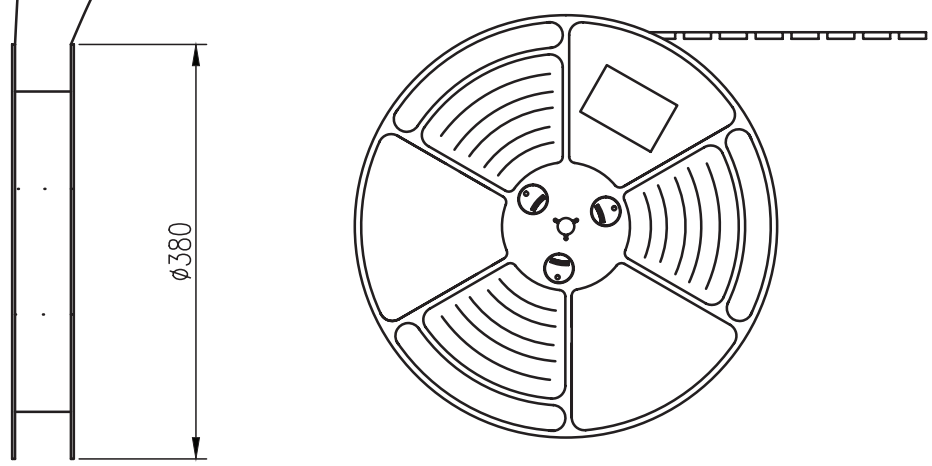
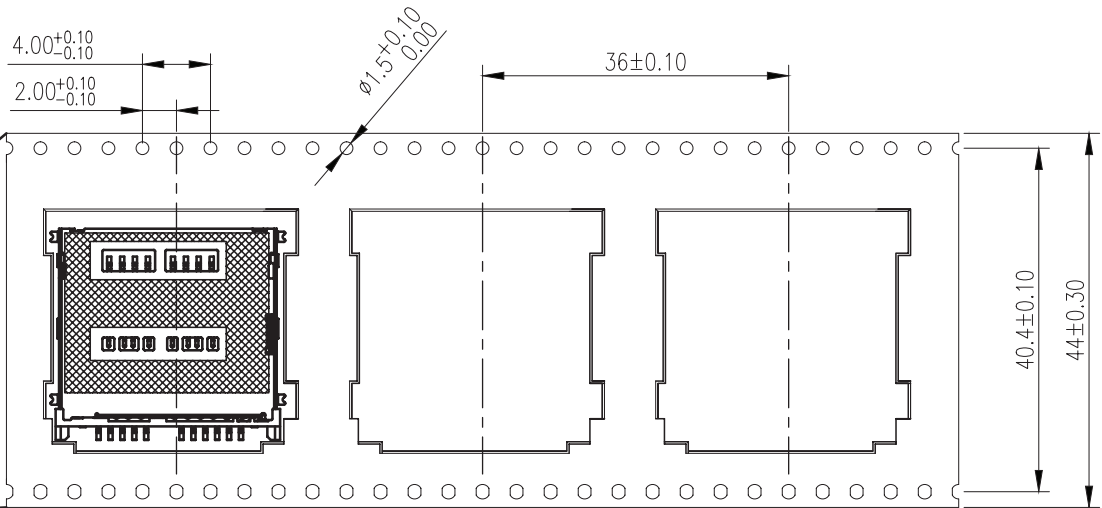
## PACKAGING

units: mm

Reel Size:  $\varnothing 380$  mm

Reel QTY: 450 pcs per reel

USER DIRECTION OF UNREELING



## REVISION HISTORY

rev.	description	date
1.0	initial release	10/26/2023

The revision history provided is for informational purposes only and is believed to be accurate.



CUI Devices offers a one (1) year limited warranty. Complete warranty information is listed on our website.

CUI Devices reserves the right to make changes to the product at any time without notice. Information provided by CUI Devices is believed to be accurate and reliable. However, no responsibility is assumed by CUI Devices for its use, nor for any infringements of patents or other rights of third parties which may result from its use.

CUI Devices products are not authorized or warranted for use as critical components in equipment that requires an extremely high level of reliability. A critical component is any component of a life support device or system whose failure to perform can be reasonably expected to cause the failure of the life support device or system, or to affect its safety or effectiveness.

[cuidevices.com](http://cuidevices.com)